

AReS™: The Next Generation of POTS Replacement Solutions

The End of an Era:

POTS Is Rapidly Becoming Obsolete for Mission-Critical Connectivity

FCC order 10-72A1 (issued August 2, 2019) has officially granted telecommunications carriers permission to abandon outdated, degrading copper POTS lines and has deregulated the current pricing structure for analog phone lines. This means prices will continue to rise with the goal of motivating customers to move to more current and affordable IP-based technology.

As a result, MACH Networks has developed AReS™ (Analog Replacement Solution), a Cradlepoint-based, award-winning, and patent-pending solution that uses secure and reliable LTE cellular networks to route traffic to or from the Public Switched Telephone Network (PSTN), enabling full-service call completion over various encoding methods. AReS™ is specifically designed to lower operational costs and streamline execution by providing analog-to-digital conversion for virtually any specialty line, including fire alarms, elevators, HVAC, fax, blue light, POS, and other voice-related applications.

POTS (Plain Old Telephone Service) has been the primary means of voice communications for over a century, but it is now starting to show its age. Outages are becoming more common, and as demand for connectivity services increases, support costs are skyrocketing, and the current infrastructure is struggling to keep up. This is due to several factors:

- The network was designed for simple voice calls and is not well suited for today's data-intensive applications.
- POTS uses an aging infrastructure of legacy copper wires that are susceptible to weather, construction issue, and physical damage.
- The network is not scalable, so it cannot easily be expanded to meet our changing needs.

AReS™  Analog Replacement Solutions by MACH Networks



The Cost of POTS: Rising Expenses and Fewer Benefits

One of the primary issues with POTS is the aging infrastructure. Much of the equipment used to provide POTS services are decades old and need to be replaced or upgraded. This aging infrastructure is one of the main reasons POTS is becoming increasingly expensive and unreliable. Another issue with POTS is that it is a circuit-switched technology, which means that each call requires its own dedicated circuit. This can be a problem when many people try to make calls simultaneously, as the system can become overloaded. In addition, circuit-switched systems are not well suited to data applications, such as internet calling or video conferencing. As a result, the need to upgrade and maintain aging infrastructure is driving up operational costs for the carriers which are being passed along. At the same time, the lack of features and flexibility makes it even less attractive to customers.

ARes™ Lowers Operational Costs

ARes™ is a cost-effective solution that can save you money on your POTS connectivity services. With ARes™, you can keep your existing phone numbers, and there is no need to upgrade your existing infrastructure. ARes™ offers a win-win proposition for both service providers and their customers. With ARes™, you can take advantage of the latest technology and provide reliable and affordable connectivity services via Cradlepoint's industry-leading LTE routers.

Your POTS Replacement Partner MACH Networks is proud to be an AT&T Platinum solution provider. AT&T's solutions offer new connectivity options for various mission-critical applications currently using traditional wireline analog services. These solutions also provide proper failover and out-of-band management capabilities to improve network reliability and business continuity. AT&T is committed to providing the best possible customer experience and has been recognized as a top supplier of fully managed, business-level WWAN solutions to service providers and VARs.

ARes™: The Ultimate POTS/Analog Line Replacement Solution

ARes™ is a next-generation POTS replacement solution that is more reliable, scalable, and affordable than traditional copper-based solutions. ARes™ uses a proprietary mesh network topology that is self-healing and adaptive, making it ideal for mission-critical applications. It also has built-in power redundancy and can be easily expanded as needs change.

ARes™ is one of the only POTS replacement solutions that are fully compliant with the FCC's new mandates and the decommissioning of copper phone lines by all major carriers, making it the perfect choice for organizations looking to upgrade their analog infrastructure.

How ARes™ Works

ARes™ enterprise-class POTS replacement solutions are specifically designed to provide IP-based dial tone over LTE for elevators, alarms, call boxes, fax machines, POS terminals, etc. The solution employs industry-leading Cradlepoint routers to deliver secure and dependable LTE cellular connectivity while routing traffic across the Public Switched Telephone Network (PSTN) and completing calls using various encoding methods.



- **Elevators and Call Boxes:**
ARes™ is fully compliant with the FCC's new guidelines and is approved as a life safety connection and code compliant in all 50 states and Canada.
- **Alarms:**
ARes™ is UL listed and approved. As a reliable and scalable solution, ARes can be easily expanded as needs change.
- **Fax Machines and POS Terminals:**
ARes™ is a reliable and affordable solution for businesses that need to replace analog fax machines and POS terminals.

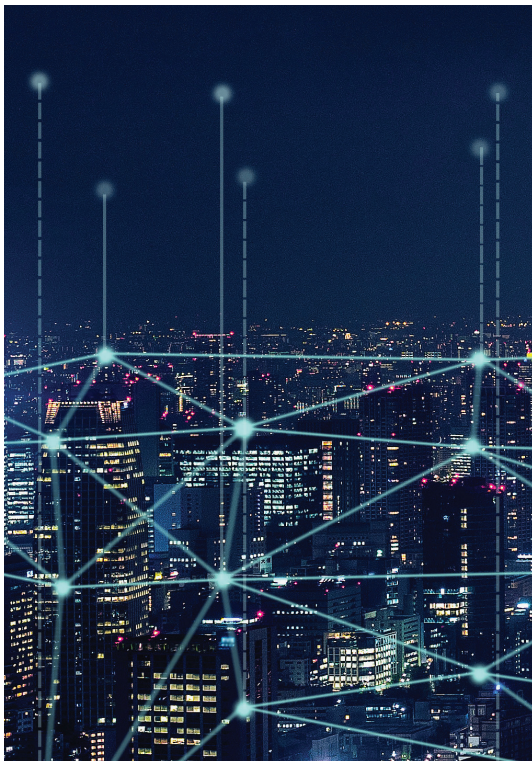
AReS™ Benefits

A fully managed, single-source solution for POTS replacement, AReS™ is perfect for VARs, service providers, telecom agents, and businesses looking to cut costs and simplify their operations by converting analog devices to digital. AReS™ provides high-performance, fully managed, and code-compliant POTS replacement solutions covered by a lifetime warranty for organizations looking to cut costs and streamline operations.

- **Cost Savings:** The cost savings from converting to AReS™ can range from 30-50% when compared with traditional copper analog lines, thanks to the more reliable service and network connectivity.
- **High Performance:** AReS™ provides enterprise-class 4G LTE-driven connectivity that improves performance and reliability for mission-critical applications, including life safety, monitoring, HVAC, and many more.
- **Latest Technology:** AReS™ is an IP-based solution designed to provide mission-critical connectivity for the foreseeable future. In addition, AReS™ can be quickly and easily upgraded to 5G, ensuring connectivity for many years to come.
- **Fully Managed:** AReS™ is a fully managed solution that is activated, configured, and monitored by trained professionals to ensure uptime is maximized and data overages are reduced.
- **Compliant:** AReS™ is code compliant in all 50 states and Canada with FCC approval as a life safety connection and carries UL listing and approval.
- **Simple Billing:** With AReS™, you will no longer have to worry about complicated billing or unexpected fees, as we manage all the carrier relationships.
- **Highly Secure:** AReS™ comes with a high-performance, highly secure NAT router with built-in security features such as AES encryption, security certificates, etc.

The significance of AReS™ goes beyond just the product itself. The true value is in the people, processes, and partnerships that make it all possible. AReS™ is a complete solution that includes hardware, software, connectivity, warranty, and management — all delivered as a fully managed service.

Our AReS™ solutions are designed to enable you to focus on your customers and growing your business. Give us a call to learn more.



About MACH Networks

Since 2008, MACH Networks makes it quick, easy, and profitable for Service Providers, VARs, Agents, and System Integrators to add fully managed 4G/5G LTE or satellite connectivity solutions to their portfolios. MACH Networks provides a complete end-to-end solution for analog line and POTS replacement, including hardware, software, connectivity, warranty, and management, making it a true one-call vendor for all POTS lines.

Our fully managed 4G/5G LTE solutions provide reliable, secure, and cost-effective connectivity using enterprise-class routers combined with service on the best available networks. In addition to outstanding pre-sales support, complementary configuration, and site surveys, MACH provides world-class remote monitoring and device management, data plan usage monitoring and management, and ongoing technical support.

Our robust and reliable AReS™ product line is perfect for any business that needs to replace their POTS lines. Contact us today to learn more about how we can help you upgrade your connectivity infrastructure at 866.972.7677 and visit www.machnetworks.com to learn more.

MACH Networks

1930 Palomar Point Way, Suite 104 | Carlsbad, CA 92008
866.972.7677 | sales@machnetworks.com | www.machnetworks.com

